

Components



hotspring

Coil heaters

For heating of distributor bars and hot runner nozzles (hot runner technology) as well as welding rulers and sealing heads (packaging industry).



hotslot

Nozzle heating elements

For the heating of hot runner nozzles in plastic injection molding processes. Due to the low wall thickness are minimum nest distances possible.



hotflex

Flexible tubular heaters

For the heating of hot runner distributor bars with arbitrary slot course for heating capacity close to the ground channel. Bendable by hand.



hotflex cs

Flexible tubular heaters

The special feature is the bendable unheated zone. No design data of the groove.



tempflex

Flexible temperature channel

Flexible temperature control channel for cooling or heating with oil or water. Close contour tempering depending on self-selected slot course.



hottube

Tubular heaters

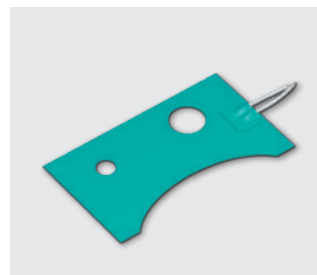
For heating hot runner manifold bars, welding bars and heating plates or also in screw-in tubular heaters, instantaneous water heaters and flange heaters.



hotrod

Cartridge heaters (LHT and HHP)

For heating nozzles, distributor bars, welding bars, hot stamping, cutting knives, embossing rollers and analysis equipment.



hotform

Silicone heating elements

Highly efficient universal solution for homogeneous surface temperature control. The innovative heatsealing band geometry guarantees a rapid transmission and thus uniform distribution of heat.



hotcontrol

Thermocouples and RTDs

For temperature measurement on heating elements and tools as well as temperature measurement for the control of the heat output.



hotcontrol

Temperature controllers

For the regulation of the heating capacity to maintain preset tool temperatures.



hotcast

Die-casting nozzle heaters (GMH and OMH)

For heating of machine nozzles for the melt transport from the casting neck up to the sprue nozzle in zinc die casting.



Isolite

Ceramic lubricant

Installation and removal aid for heating cartridges. Thermally conductive and electrically insulating.

Systems



Z-System
Partial dynamic temperature control

High-quality design surfaces, shortest cycle times and minimum energy consumption. Small wall thicknesses open up further perspectives for the production of microstructures and miniature components.



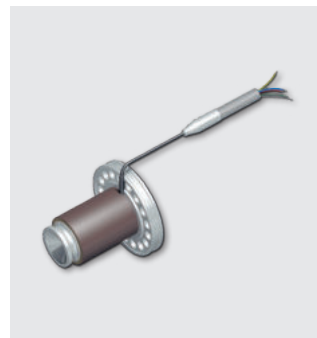
D-System
Data loggers

For the quick and easy inspection of the water-hydraulic happenings for example in injection moulds or heat exchangers.



P-System
Heating plates

Innovative system solution for the process-safe generation more uniform and homogeneous temperature fields during processing and machining of plastic foils.



hotcast
Sprue nozzles

The sprue nozzle is used to the melting point is constructive directly in front of the parting line positioned. The sprue is thus considerably reduced. The cycle time is reduced by up to 40 % and simultaneously the raw part quality increases.

Projects

- Custom designed heating solutions
- Design of heated machine components
- Optimizing and design of heating systems for industrial applications
- Engineering and development service

Competences

- Experienced engineering staff
- Integration of new technology with proven componentry
- Effective distribution and control of process heat
- Performance, reliability, durability of final product
- Technology adaptation from other industrie applications
- Control systems technology

Development process

- Thorough understanding of customer requirement prior to design
- Commercial rating of technical options
- Engineering – Design – Fabrication
- Prototype bench test to technical specification
- System test with customer
- Production release

